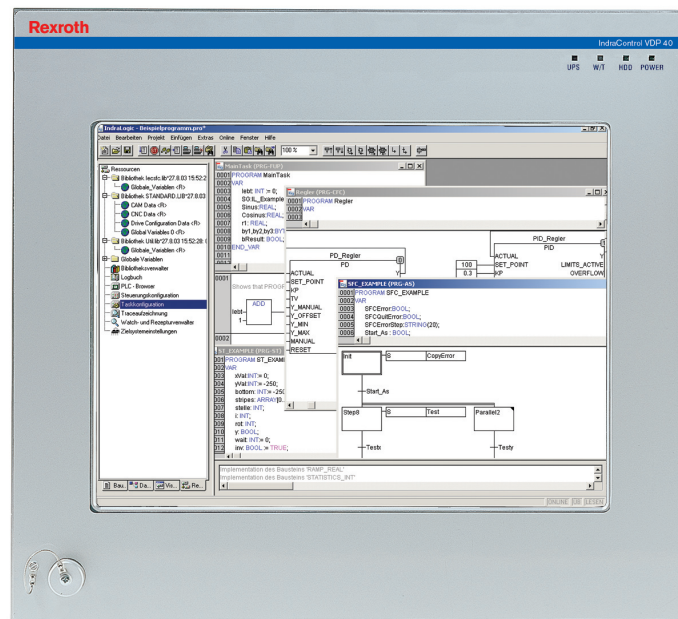


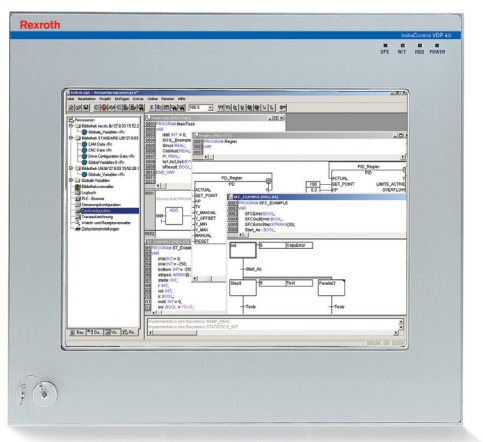
Displays
15" Display Touch
IndraControl VDP 40 Touch



Displays

15" Display Touch ■ IndraControl VDP 40 Touch**Documentation**

- Project Planning Manual

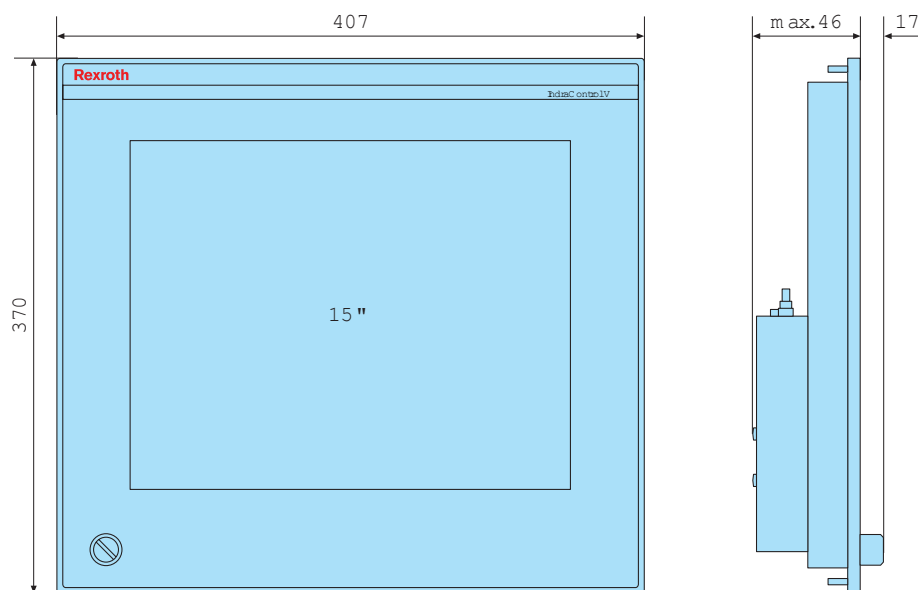
**Technical data**

| | | VDP 40.3DE |
|----------------------|------------|--|
| Display | | |
| Type | | TFT |
| Size | | 15" |
| Colours/Greyscales | | 256000 colours |
| Resolution | | 1024 x 768 |
| Operation | | |
| Type | | touch operation |
| Operation | | Touch screen |
| Keyboard | | Additional components VAK |
| Status-LED | | Voltage hard disk Temperature UPS |
| Interfaces | | |
| USB | | 4 x USB (Standard) 1 x USB Front (Standard) |
| Others | | 1 x CDI interface – connection IPC to display (Standard) |
| Electric data | | |
| Voltage supply | U | 24 VDC |
| Min. | U_{\min} | 19 VDC |
| Max. | U_{\max} | 30 VDC |
| Input Power | [W] | 35 |
| Protection | | |
| Category Front | | IP65 |

Displays

15" Display Touch ■ IndraControl VDP 40 Touch

| Others | | |
|--|------------|-------------------------|
| colours | | Light-grey RAL 7035 |
| Forces | | |
| Vibration Resistance | [g] | 1 |
| Shock Resistance | [g] | 15 |
| Standards | | |
| Certification | | CE/UL/CSA-- |
| Weight | | |
| Weight | | 5,8 kg |
| Ambient conditions | | |
| Ambient temp. operation | Min. [°C] | 5 |
| | Max. [°C] | 45 |
| Ambient temp. storage | Min. [°C] | -20 |
| | Max. [°C] | 60 |
| Relative humidity operation | Min. [%] | 5 |
| | Max. [%] | 85 |
| Relative humidity storage | Min. [%] | 5 |
| | Max. [%] | 85 |
| Atmospheric pressure (operation) | Min. [kPa] | 80 |
| | Max. [kPa] | 106 |
| | EN 60034-1 | (up to 2,000 above MSL) |
| Atmospheric pressure (transport/storage) | Min. [kPa] | 70 |
| | Max. [kPa] | 106 |
| | EN 60034-1 | (up to 3,000 above MSL) |

Dimensions

Displays

15" Display Touch ■ IndraControl VDP 40 Touch

| | | VDP 40.3DE |
|-------------------|------|------------|
| Dimensions | | |
| Height H | [mm] | 370 |
| Width W | [mm] | 407 |
| Depth D | [mm] | 46 |

Type code

| Type code | Description | Part No.: |
|---------------------|--|------------|
| VDP40.3DEN-D1-NN-NN | IndraControl VDP 40 with 15" display, touch screen | R911171016 |

| Type code | Description | Part No.: |
|----------------------------------|-----------------------------------|------------|
| DOK-SUPPL*-VDP*XX.3***-PR01-EN-P | IndraControl VDP project planning | R911323862 |
| DOK-SUPPL*-VDP*XX.3***-PR03-DE-P | IndraControl VDP project planning | R911323861 |

Bosch Rexroth AG

Electric Drives and Controls

P.O. Box 13 57

97803 Lohr, Germany

Bgm.-Dr.-Nebel-Str. 2

97816 Lohr, Germany

Phone +49 9352-40-0

Fax +49 9352-40-4885

www.boschrexroth.com/electrics

The data specified above only serve to describe the product.

As our products are constantly being further developed, no statements concerning a certain condition or suitability for a certain application can be derived from our information. The information given does not release the user from the obligation of own judgment and verification. It must be remembered that our products are subject to a natural process of wear and aging.