

End Fitting

Standard Dimensions

End Fitting

A5

B5

C5

D5

E5

F5

G5

Rod Shroud W5-15

Eye A5
max. force 800 N

Stud Thread B5

Angle Ball Joint C5
max. force 500 N

Clevis Fork D5
max. force 800 N

Swivel Eye E5
max. force 800 N

Inline Ball Joint F5
max. force 500 N

Ball Socket G5
max. force 500 N

Adjuster Knob DE-GAS-5
See page 149.

Dimensions		
Type	Stroke mm	L extended
GS-15-20	20	67
GS-15-40	40	107
GS-15-50	50	127
GS-15-60	60	147
GS-15-80	80	187
GS-15-100	100	227
GS-15-120	120	267
GS-15-150	150	327
GS-15-200	200	427

Ordering Example **GS-15-150-AC-150**

Type (Push Type) _____

Body Ø (15.6 mm) _____

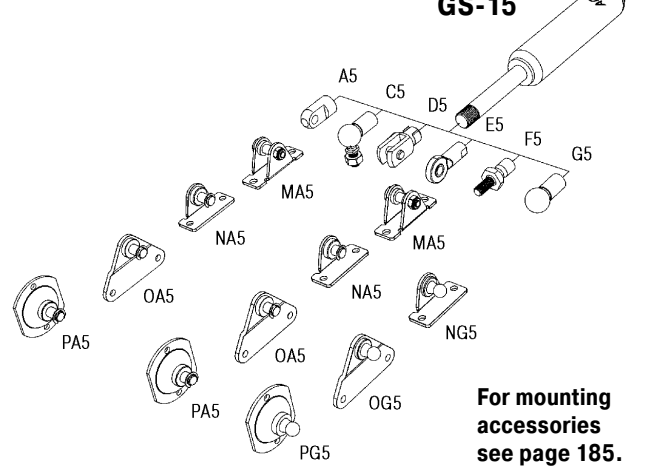
Stroke (150 mm) _____

Piston Rod End Fitting A5 _____

Body End Fitting C5 _____

Nominal Force F₁ 150 N _____

The end fittings are interchangeable.
For mounting accessories see page 185.



Technical Data

On request: Without damping, strong end position damping, special force curves, special lengths, strokes, alternative end fittings, wiper, stainless steel (see pages 165 to 172).

Available force range F₁ at 20 °C: 40 N to 400 N

Mounting: We recommend mounting with piston rod downwards to take advantage of the built-in end position damping.

End position damping length: Approx. 10 mm

Material: Body: Black coated steel. Piston rod: With wear-resistant coating. End fittings: Zinc plated steel.

Progression: Approx. 27 %, F₂ max. 500 N

Issue 1.2013 Specifications subject to change