

# MD508

*Modular Belt Series*

*MD508 C*

*MD508 FG*

*MD508 PR%25*

*Sprockets & Accessories*

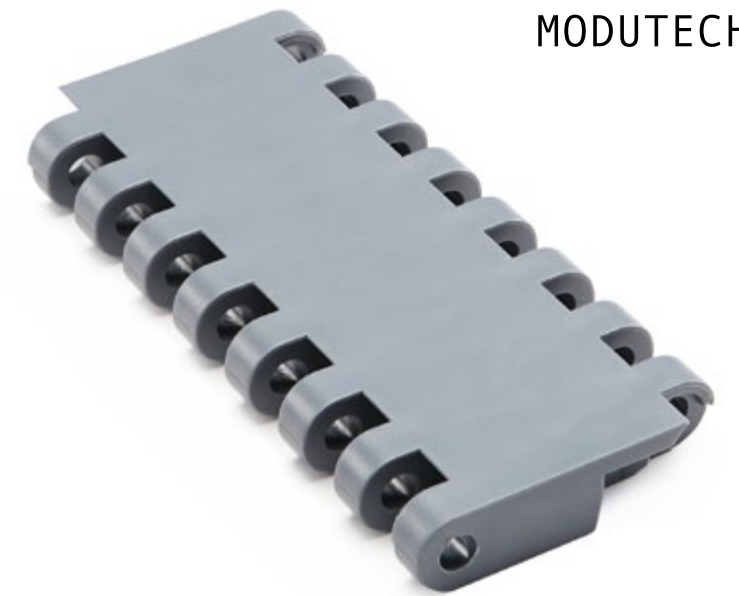
*Engineering Information*





## MD508 C ( Heavy Duty Food Belts )

Pitch:	50,8 mm / <b>2 inch</b>
Belt Surface:	Close, Smooth Surface
Minimum Width:	150 mm / <b>5.90 inch</b>
Open Area (%):	0%
Flight:	Yes ( T50, T100, T150 )
Sidewall:	No
Rod:	Ø7 mm / <b>0.275 inch</b> - Self Lock
Approved:	FDA and EU
Curve:	No
Color:	Additional colors available
Cleanability:	Good
Belt Thickness:	16 mm / <b>0.629 inch</b>



### Product Features and Functional Benefits

- Unique sprocket engagement reduces pulsation and increases load capacity.
- High power, bi-directional belt for long conveyors.
- Unique sprocket engagement - higher product load and longer conveyors.
- Strong and thick product supports allow more load without breaking.
- Impact resistance to withstand heavy objects falling into the belt.

### Available Moulded Module Sizes

- 150 mm / **5.90 inch** module

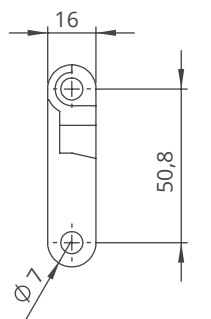
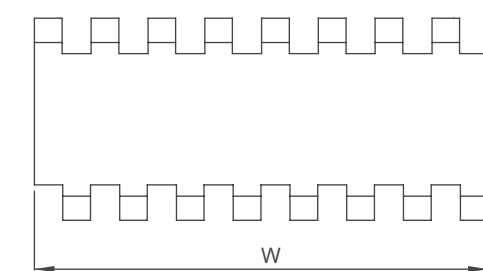
### MD508 C / Technical Information

BELT MATERIAL	BELT STRENGTH				TEMPERATURE		BELT WEIGHT Kg/m <sup>2</sup> / lb/ft <sup>2</sup>
	Straight		Curve		°C / °F (min.)	°C / °F (max.)	
	N/m	lb/ft	N/m	lb/ft			
Polypropylene	37400	<b>2562</b>	-	-	+5 / <b>+41</b>	+90 / <b>+194</b>	8,7 / <b>1.78</b>
Polyethylene	26400	<b>1808</b>	-	-	-73 / <b>-99.4</b>	+66 / <b>+150.8</b>	9,3 / <b>1.90</b>
Acetal	66000	<b>4522</b>	-	-	-43 / <b>-45.4</b>	+110 / <b>+230</b>	13,5 / <b>2.77</b>

- Belt strength and temperature values are maximum on the table.

### MD508 C / Standard Belt Widths

BELT SERIES	WIDTH (W)				Belt With Tolerance (max.)
	PP-PE		POM		
	mm	inch	mm	inch	
MD508 C	150,0	<b>5.91</b>	150,0	<b>5.91</b>	± 0,5 mm
MD508 C	225,0	<b>8.86</b>	225,0	<b>8.86</b>	± 2 mm
MD508 C	300,0	<b>11.81</b>	300,0	<b>11.81</b>	± 2 mm
MD508 C	375,0	<b>14.76</b>	375,0	<b>14.76</b>	± 2 mm
MD508 C	450,0	<b>17.72</b>	450,0	<b>17.72</b>	± 3 mm
MD508 C	525,0	<b>20.67</b>	525,0	<b>20.67</b>	± 3 mm
MD508 C	600,0	<b>23.62</b>	600,0	<b>23.62</b>	± 3 mm
MD508 C	675,0	<b>26.57</b>	675,0	<b>26.57</b>	± 3 mm
MD508 C	750,0	<b>29.53</b>	750,0	<b>29.53</b>	± 4 mm
MD508 C	825,0	<b>32.48</b>	825,0	<b>32.48</b>	± 4 mm
MD508 C	900,0	<b>35.43</b>	900,0	<b>35.43</b>	± 4 mm
MD508 C	975,0	<b>38.38</b>	975,0	<b>38.38</b>	± 5 mm
MD508 C	1050,0	<b>41.34</b>	1050,0	<b>41.34</b>	± 5 mm
MD508 C	1125,0	<b>44.29</b>	1125,0	<b>44.29</b>	± 5 mm



- Standard belt increments 75 mm.
- Non-standard belt increments 18,75 mm.
- Please contact with customer service for precise belt measurements.

# MD508 C

## Modular Belt Series

### • Corrugated Cardbord Applications

Down Stackers, Corrugator Take Off, Strap Feed

### • Lumber Industry

Lumber Transport, Cutting Process

### • Snack Food Applications

Potato Processing

### • Fruits and Vegetables Applications

Bulk Feeding, Elevator, Control Sorting Table, Filling

### • Automotive Applications

Chair Lift - Feeder

### • Packaging Applications

Bluk Inclines, Box Transport Horizontal



## MD508 FG ( Heavy Duty Food Belts )

Pitch:	50,8 mm / <b>2 inch</b>
Belt Surface:	Open, Smooth Surface
Minimum Width:	150 mm / <b>5.90 inch</b>
Open Area (%):	34%. ( Biggest opening 6 x 19,8 mm )
Flight:	Yes ( T50, T100, T150 )
Sidewall:	No
Rod:	Ø7 mm / <b>0.275 inch</b> - Self Lock
Approved:	FDA and EU
Curve:	No
Color:	Additional colors available
Cleanability:	Good
Belt Thickness:	16 mm / <b>0.629 inch</b>



### Product Features and Functional Benefits

- Belt provides optimal open area for drainage and airflow.
- Unique sprocket engagement reduces pulsation and increases load capacity.
- High power, bi-directional belt for long conveyors.
- Unique sprocket engagement - higher product load and longer conveyors.
- Strong and thick product supports allow more load without breaking.
- Impact resistance to with stand heavy objects falling on the belt.

### Available Moulded Module Sizes

- 150 mm / **5.90 inch** module

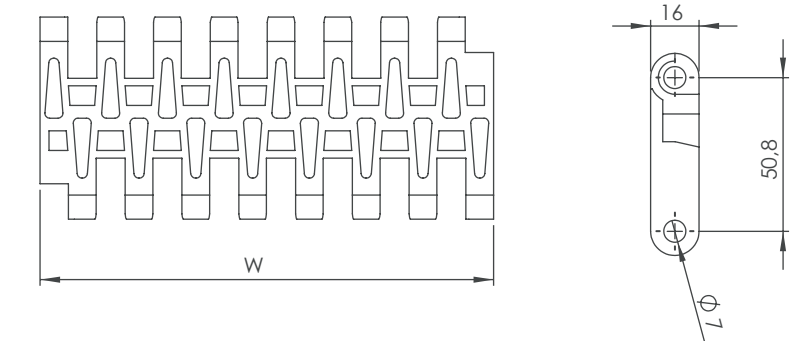
### MD508 FG / Technical Information

BELT MATERIAL	BELT STRENGTH				TEMPERATURE		BELT WEIGHT Kg/m <sup>2</sup> / lb/ft <sup>2</sup>
	Straight		Curve		°C / °F (min.)	°C / °F (max.)	
	N/m	lb/ft	N/m	lb/ft			
Polypropylene	28600	<b>1959</b>	-	-	+5 / <b>+41</b>	+90 / <b>+194</b>	6,8 / <b>1.39</b>
Polyethylene	19800	<b>1356</b>	-	-	-73 / <b>-99.4</b>	+66 / <b>+150.8</b>	7,2 / <b>1.48</b>
Acetal	38500	<b>2637</b>	-	-	-43 / <b>-45.4</b>	+110 / <b>+230</b>	10,2 / <b>2.09</b>

- Belt strength and temperature values are maximum on the table.

### MD508 FG / Standard Belt Widths

BELT SERIES	WIDTH (W)				Belt With Tolerance (max.)
	PP-PE		POM		
	mm	inch	mm	inch	
MD508 FG	150,0	<b>5.91</b>	150,0	<b>5.91</b>	± 1 mm
MD508 FG	225,0	<b>8.86</b>	225,0	<b>8.86</b>	± 2 mm
MD508 FG	300,0	<b>11.81</b>	300,0	<b>11.81</b>	± 2 mm
MD508 FG	375,0	<b>14.76</b>	375,0	<b>14.76</b>	± 2 mm
MD508 FG	450,0	<b>17.72</b>	450,0	<b>17.72</b>	± 3 mm
MD508 FG	525,0	<b>20.67</b>	525,0	<b>20.67</b>	± 3 mm
MD508 FG	600,0	<b>23.62</b>	600,0	<b>23.62</b>	± 3 mm
MD508 FG	675,0	<b>26.57</b>	675,0	<b>26.57</b>	± 4 mm
MD508 FG	750,0	<b>29.53</b>	750,0	<b>29.53</b>	± 4 mm
MD508 FG	825,0	<b>32.48</b>	825,0	<b>32.48</b>	± 4 mm
MD508 FG	900,0	<b>35.43</b>	900,0	<b>35.43</b>	± 4 mm
MD508 FG	975,0	<b>38.38</b>	975,0	<b>38.38</b>	± 5 mm
MD508 FG	1050,0	<b>41.34</b>	1050,0	<b>41.34</b>	± 5 mm
MD508 FG	1125,0	<b>44.29</b>	1125,0	<b>44.29</b>	± 5 mm



- Standard belt increments 75 mm.
- Non-standard belt increments 18,75 mm.
- Please contact with customer service for precise belt measurements.

# MD508 FG

## Modular Belt Series

### • Bakery Applications

Oven Infeed/Outfeed, Cooling Lines, Coating Lines, Glazing Lines, Freezing Lines, Conditioning Lines

### • Sea Food Applications

Breading Machines, Draining Lines

### • Snack Food Applications

Proofer Lines, Boiler Infeed, Oven Infeed / Outfeed, Cooling Lines

### • Fruits and Vegetables Applications

Prewashing / Rinsing, Draining

### • Tire Manufacturing Applications

Mixer Infeed / Outfeed, Extrusion Shower Lines, Cooling Incline, Cooling Decline, Cooling Horizontal



## MD508 PR%25 ( Heavy Duty Food Belts )

Pitch:	50,8 mm / <b>2 inch</b>
Belt Surface:	Open, Smooth Surface
Minimum Width:	150 mm / <b>5.90 inch</b>
Open Area (%):	25%. ( Biggest opening 3 x 19,5 mm )
Flight:	Yes ( T50, T100, T150 )
Sidewall:	No
Rod:	Ø7 mm / <b>0.275 inch</b> - Self Lock
Approved:	FDA and EU
Curve:	No
Color:	Additional colors available
Cleanability:	Good
Belt Thickness:	16 mm / <b>0.629 inch</b>



### Product Features and Functional Benefits

- Belt provides optimal open area for drainage and airflow.
- Unique sprocket engagement reduces pulsation and increases load capacity.
- High power, bi-directional belt for long conveyors.
- Unique sprocket engagement - higher product load and longer conveyors.
- Strong and thick product supports allow more load without breaking.
- Impact resistance to with stand heavy objects falling on the belt.

### Available Moulded Module Sizes

- 150 mm / **5.90 inch** module

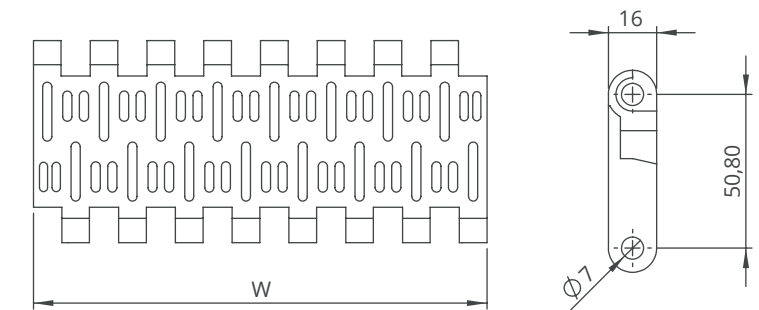
### MD508 PR%25 / Technical Information

BELT MATERIAL	BELT STRENGTH				TEMPERATURE		BELT WEIGHT
	Straight		Curve		°C (min.) - °F (min.)	°C (max.) - °F (max.)	Kg/m <sup>2</sup> - lb/ft <sup>2</sup>
	N/m	lb/ft	N/m	lb/ft			
Polypropylene	41800	<b>2863</b>	-	-	+5 / <b>+42.8</b>	+90 / <b>+194</b>	8,0 - <b>1.64</b>
Polyethylene	26400	<b>1808</b>	-	-	-73 / <b>-99.4</b>	+66 / <b>+150.8</b>	8,3 - <b>1.70</b>
Acetal	60500	<b>4145</b>	-	-	-43 / <b>-45.4</b>	+110 / <b>+230</b>	12,0 - <b>2.46</b>

- Belt strength and temperature values are maximum on the table.

### MD508 PR%25 / Standard Belt Widths

BELT SERIES	WIDTH (W)				Belt With Tolerance (max.)
	PP-PE		POM		
	mm	inch	mm	inch	
MD508 PR25	150,0	<b>5.91</b>	150,0	<b>5.91</b>	± 1 mm
MD508 PR25	225,0	<b>8.86</b>	225,0	<b>8.86</b>	± 2 mm
MD508 PR25	300,0	<b>11.81</b>	300,0	<b>11.81</b>	± 2 mm
MD508 PR25	375,0	<b>14.76</b>	375,0	<b>14.76</b>	± 2 mm
MD508 PR25	450,0	<b>17.72</b>	450,0	<b>17.72</b>	± 3 mm
MD508 PR25	525,0	<b>20.67</b>	525,0	<b>20.67</b>	± 3 mm
MD508 PR25	600,0	<b>23.62</b>	600,0	<b>23.62</b>	± 3 mm
MD508 PR25	675,0	<b>26.57</b>	675,0	<b>26.57</b>	± 4 mm
MD508 PR25	750,0	<b>29.53</b>	750,0	<b>29.53</b>	± 4 mm
MD508 PR25	825,0	<b>32.48</b>	825,0	<b>32.48</b>	± 4 mm
MD508 PR25	900,0	<b>35.43</b>	900,0	<b>35.43</b>	± 4 mm
MD508 PR25	975,0	<b>38.38</b>	975,0	<b>38.38</b>	± 5 mm
MD508 PR25	1050,0	<b>41.34</b>	1050,0	<b>41.34</b>	± 5 mm
MD508 PR25	1125,0	<b>44.29</b>	1125,0	<b>44.29</b>	± 5 mm



- Standard belt increments 75 mm.
- Non-standard belt increments 18,75 mm.
- Please contact with customer service for precise belt measurements.

# MD508 PR%25

## Modular Belt Series

### • Meat Applications

Dressing Lines, Trim Lines, Elevator, Metal Detector

### • Poultry Applications

Cut-up Lines, Debonning Lines, Chiller Discharge, Rehang / Bird Accumulation,

Freezing Lines, Elevators

### • Sea Food Applications

Draining, Elevator

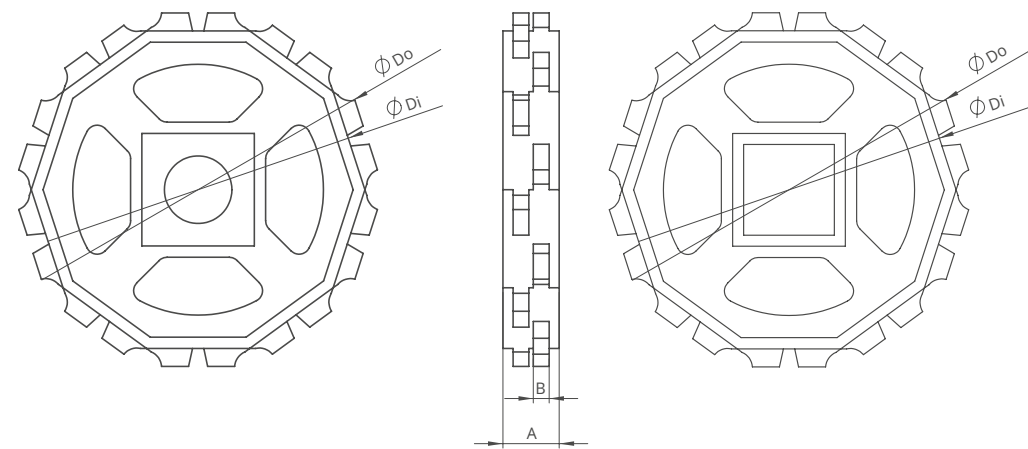
### • Snack Food Applications

Can Draining

### • Fruits and Vegetables Applications

Prewashing / Rinsing, Draining, Peeling, Elevator, Blanching

# MD508 Series Sprockets and Technical Specifications



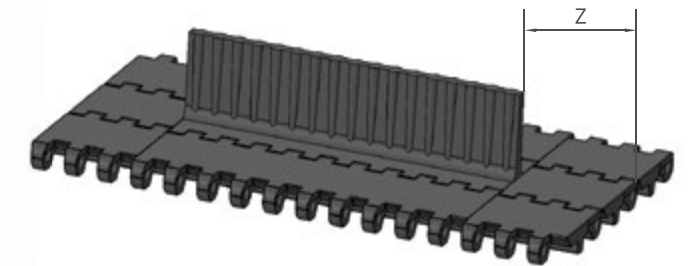
## MD508 Series / Standard Sprockets Dimensions

NO. TEETH	Di mm/inch	Do mm/inch	B mm/inch	A mm/inch	Square Bore (Q) mm/inch	Round Bore (R) mm/inch	PRODUCT CODE	
							Square Type (Q)	Round Type (R)
Z8	107,37 / <b>4.23</b>	127,35 / <b>5.01</b>	7 / <b>0.27</b>	40 / <b>1.57</b>	40 / <b>1.5</b>	25-30 / <b>1-1.25</b>	MD508SQZ8*POM	MD508SRZ8*POM
Z10	141,27 / <b>5.56</b>	160,14 / <b>6.30</b>	7 / <b>0.27</b>	40 / <b>1.57</b>	40-60 / <b>1.5-2.5</b>	25-30 / <b>1-1.25</b>	MD508SQZ10*POM	MD508SRZ10*POM
Z12	174,71 / <b>6.87</b>	193,24 / <b>7.61</b>	7 / <b>0.27</b>	40 / <b>1.57</b>	40-60 / <b>1.5-2.5</b>	25-30 / <b>1-1.25</b>	MD508SQZ12*POM	MD508SRZ12*POM

\*Other sprockets and hub sizes are manufactured up to request.  
 \*PA (Polyamide) and PP (Polypropylene) sprockets raw material is available on request.  
 \*Machined Split Sprockets are available for each size.



# MD508 Series Accessories and Technical Specifications



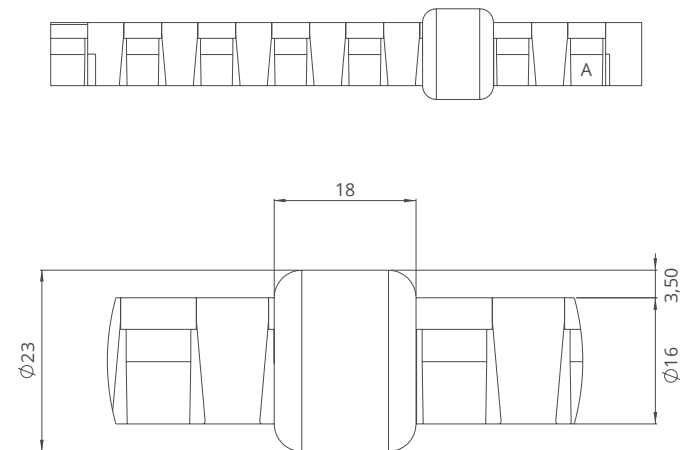
## MD508 Series / Flight Dimensions

MD508 Series / Flights		
PRODUCT CODE	Flight Height (mm/inch)	Flight Width (mm/inch)
MD508T50	50 / <b>2</b>	150 / <b>5.90</b>
MD508T100	100 / <b>4</b>	150 / <b>5.90</b>
MD508T150	150 / <b>6</b>	150 / <b>5.90</b>

## MD508 Series / Flight Technical Specifications

Possible Flight Indents for MD508 Series	Z	
	mm	inch
Standard, module cutting	37,5	<b>1.48</b>
Standard, module cutting	56,0	<b>2.20</b>
Standard, no module cutting	75,0	<b>2.95</b>
Standard, module cutting	112,5	<b>4.43</b>

\*Non-standard flight indent is on request.



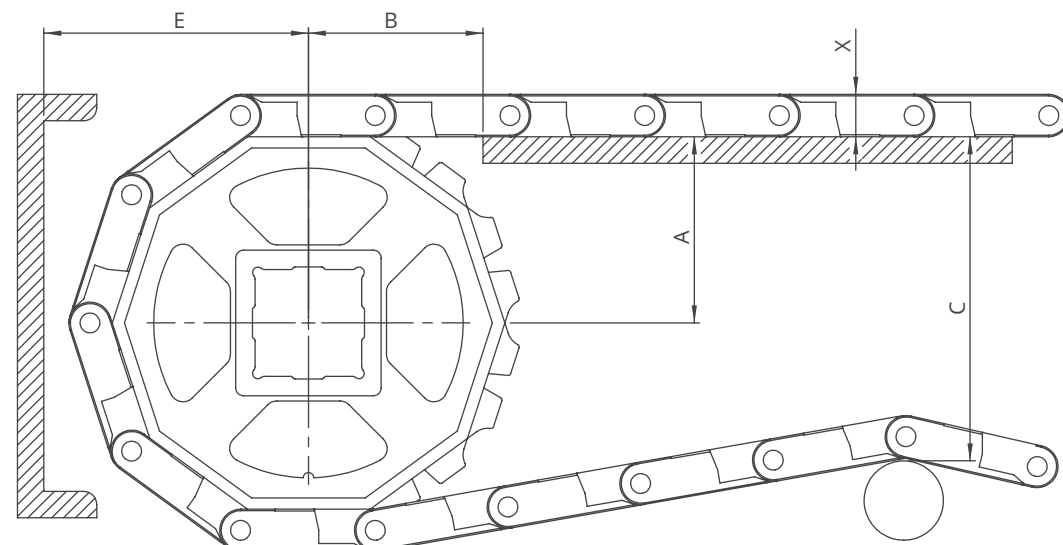
**!** Available on Close Surface Belts.

- Standard roller increments 75 mm.  
 - Please contact with customer service for roller configuration.

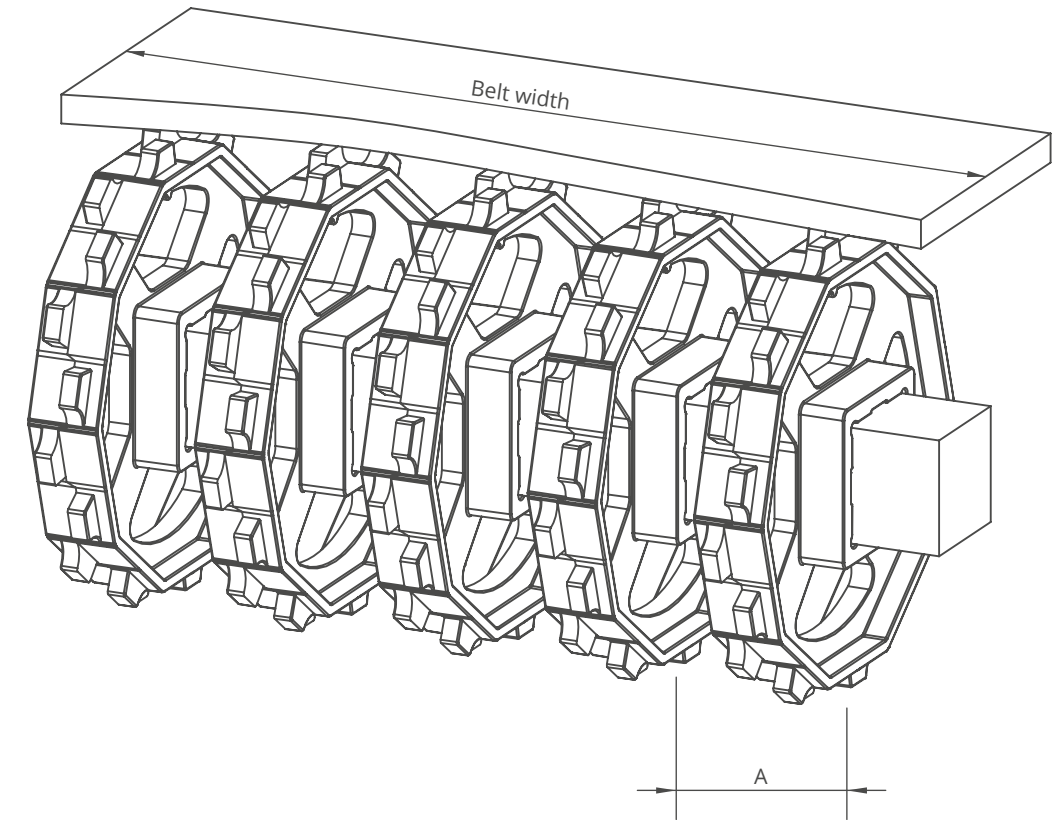
## Product Features and Functional Benefits

- Open Area 37%. ( Biggest opening 6 x 8,5 mm )
- Standard roller increments 75 mm.
- Rollers row spacing 50,8 mm.
- For low back pressure, wearstrips are placed between rollers
- For product driven application wearstrips are placed directly under the rollers.





A - ± 0,031" ( 1mm )      C - ± ( Max. )  
 B - ± 0,125" ( 3mm )      E - ± ( Min. )



## MD508 Series / Conveyor Frame Dimensions

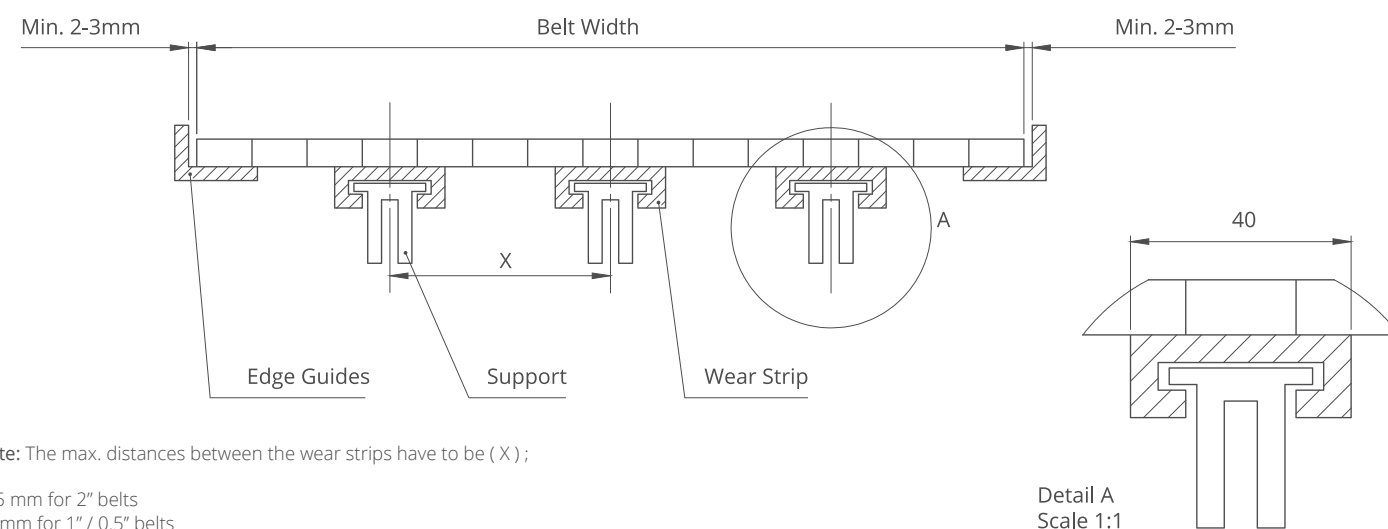
Sprockets Description		A		B		C		E		X		
Pitch Diameter		Range (Bottom to Top)		inch	mm	inch	mm	inch	mm	inch	mm	
inch	mm	inch	mm									inch
MD508 C, MD508 PR%25, MD508 FG												
<b>4.65</b>	118,0	8	<b>2.29</b>	58,1	<b>2.94</b>	74,8	<b>3.79</b>	96,2	<b>3.11</b>	79,1	<b>0.63</b>	16,0
<b>5.94</b>	151,0	10	<b>2.92</b>	74,3	<b>3.57</b>	90,7	<b>5.06</b>	128,5	<b>3.75</b>	95,3	<b>0.63</b>	16,0
<b>7.32</b>	186,0	12	<b>3.56</b>	90,5	<b>4.20</b>	106,7	<b>6.33</b>	160,9	<b>4.39</b>	111,4	<b>0.63</b>	16,0

## MD508 Series / Sprockets Arrangement

Standard Belt Width		Number of sprockets per shaft		A (mm/inch)	
mm	inch	Drive Shaft	Return Shaft	Min.	Max.
150,0	<b>5.90</b>	2	2	60/2.36	150/5.9
225,0	<b>8.86</b>	3	2	60/2.36	150/5.9
300,0	<b>11.81</b>	3	3	60/2.36	150/5.9
375,0	<b>14.76</b>	4	3	60/2.36	150/5.9
450,0	<b>17.72</b>	4	3	60/2.36	150/5.9
525,0	<b>20.67</b>	5	4	60/2.36	150/5.9
600,0	<b>23.62</b>	5	4	60/2.36	150/5.9
675,0	<b>26.57</b>	6	5	60/2.36	150/5.9
750,0	<b>29.53</b>	6	5	60/2.36	150/5.9
825,0	<b>32.48</b>	6	5	60/2.36	150/5.9
900,0	<b>35.43</b>	7	6	60/2.36	150/5.9
975,0	<b>38.39</b>	8	7	60/2.36	150/5.9
1050,0	<b>41.34</b>	9	7	60/2.36	150/5.9
1125,0	<b>44.29</b>	10	8	60/2.36	150/5.9
1200,0	<b>47.24</b>	11	8	60/2.36	150/5.9
1275,0	<b>50.20</b>	12	9	60/2.36	150/5.9
1350,0	<b>53.15</b>	13	10	60/2.36	150/5.9
1425,0	<b>56.10</b>	14	10	60/2.36	150/5.9
1500,0	<b>59.06</b>	15	11	60/2.36	150/5.9
1575,0	<b>62.00</b>	16	12	60/2.36	150/5.9

Note: Number of sprockets depends on the belt load.

## MD508 Series / Slider Support System For Straight Running Belts



Note: The max. distances between the wear strips have to be ( X );

125 mm for 2" belts  
 80 mm for 1" / 0.5" belts

Detail A  
 Scale 1:1