

XP254

Modular Belt Series

XP254 C

XP254 PR %22

XP254 FG

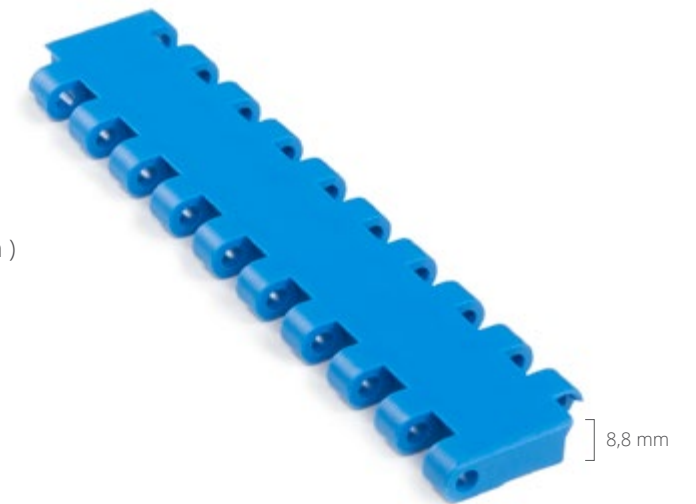
Sprockets & Accessories

Engineering Information



XP254 C

Pitch:	25,4 mm / 1 inch
Belt Surface:	Close, Smooth Surface
Minimum Width:	76,2 mm / 3 inch
Open Area (%):	0%
Flight:	Yes (T25, T50, T75, T100)
Sidewall:	Yes (h=25 mm, h=50 mm, h=75 mm, h=100 mm)
Rod:	Ø4,5 mm / 0.177 inch - Self Lock
Approved:	FDA and EU
Curve:	No
Color:	Additional colors available
Cleanability:	Good
Belt Thickness:	8.8 mm / 0.346 inch



Product Features and Functional Benefits

- Unique sprocket engagement - higher product load and longer conveyors.
- Unique sprocket engagement reduces pulsation and increases load capacity.
- Close transfer applications.
- Extra power, bi-directional belt for long conveyors.
- Chamfered belt edges.

Available Moulded Module Sizes

- 152,4 mm / **6 inch** module
- 76,2 mm / **3 inch** module

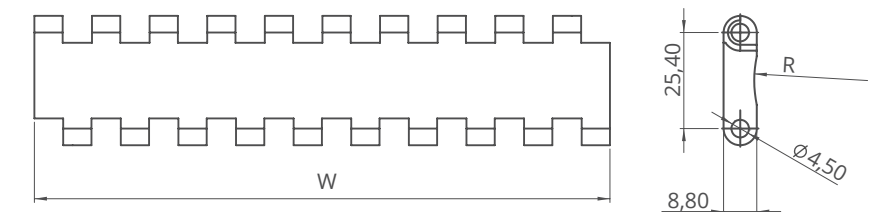
XP254 C / Technical Information

BELT MATERIAL	BELT STRENGTH				TEMPERATURE		BELT WEIGHT
	Straight		Curve		°C / °F (min.)	°C / °F (max.)	Kg/m ² / lb/ft ²
	N/m	lb/ft	N/m	lb/ft			
Polypropylene	18400	1260.80	-	-	+5 / +41	+90 / +194	5,50 / 1.13
Polyethylene	9100	623.55	-	-	-73 / -99.4	+66 / +150.8	5,80 / 1.19
Acetal	32100	2199.55	-	-	-43 / -45.4	+110 / +230	7,90 / 1.62

- Belt strength and temperature values are maximum on the table.

XP254 C / Standard Belt Widths

BELT SERIES	WIDTH (W)				Belt With Tolerance (max.)
	PP-PE		POM		
	mm	inch	mm	inch	
XP254 C	152,4	6.0	152,4	6.0	± 0,5 mm
XP254 C	228,6	9.0	228,6	9.0	± 2 mm
XP254 C	304,8	12.0	304,8	12.0	± 2 mm
XP254 C	381,0	15.0	381,0	15.0	± 3 mm
XP254 C	457,2	18.0	457,2	18.0	± 3 mm
XP254 C	533,4	21.0	533,4	21.0	± 3 mm
XP254 C	609,6	24.0	609,6	24.0	± 3 mm
XP254 C	685,8	27.0	685,8	27.0	± 4 mm
XP254 C	762,0	30.0	762,0	30.0	± 4 mm
XP254 C	838,2	33.0	838,2	33.0	± 4 mm
XP254 C	914,4	36.0	914,4	36.0	± 4 mm
XP254 C	990,6	39.0	990,6	39.0	± 4 mm
XP254 C	1066,8	42.0	1066,8	42.0	± 4 mm
XP254 C	1143,0	45.0	1143,0	45.0	± 4 mm



- Standard belt increments 76,2 mm.
- Non-standard belt increments 15,2 mm.
- Please contact with customer service for precise belt measurements.

XP254 C

Modular Belt Series

• Seafood Applications

Inspection Tables, Grading Lines, Trim Lines

• Bakery Applications

Row Dough Handling, Cooling Lines, Packing Lines

• Snack Food Applications

Corn Processing

• Fruits and Vegetables Applications

Bulk Feeding, Elevator, Control - Sorting Table

• Tire Manufacturing Applications

Mixer Infeed - Outfeed, Calendering Infeed, Extrusion Outfeed

• Packaging Applications

Labelling, Case Packers, Tray Packers, Palletizing - Depalletizing

• Printing and Paper Applications

Printing Machine Outfeed, Wrapping Machine Outfeed

• Beverages and Bottling Applications

Can Palletizing and Depalletizing, Glass Palletizing and Depalletizing,

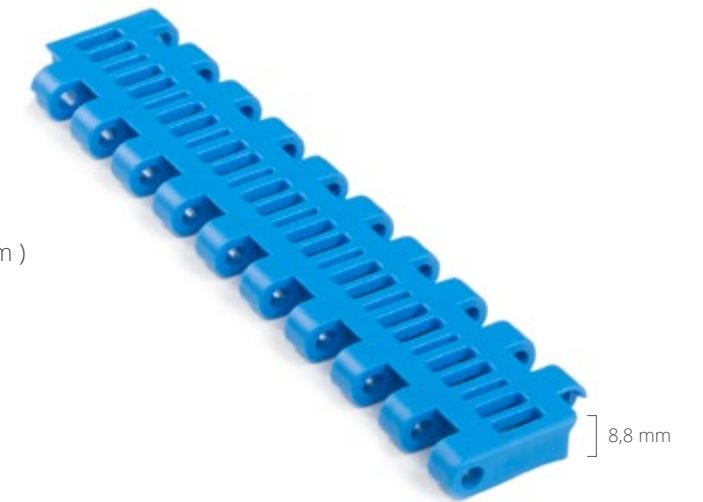
Pet Palletizing and Depalletizing

• Material Handling Applications

Incline Applications, Palletizers, Packaging Lines

XP254 PR%22

Pitch:	25,4 mm / 1 inch
Belt Surface:	Open, Smooth Surface
Minimum Width:	76,2 mm / 3 inch
Open Area (%):	22%. (Biggest opening 9,44 x 3 mm)
Flight:	Yes (T25, T50, T75, T100)
Sidewall:	Yes (h=25 mm, h=50 mm, h=75 mm, h=100 mm)
Rod:	Ø4,5 mm / 0.177 inch - Self Lock
Approved:	FDA and EU
Curve:	No
Color:	Additional colors available
Cleanability:	Good
Belt Thickness:	8,8 mm / 0.346 inch



Product Features and Functional Benefits

- Unique sprocket engagement - precise indexing, easy cleaning.
- Different openings to optimize performance in cooling and draining applications.
- Extra power, bi-directional belt for long conveyors.
- Unique sprocket engagement reduces pulsation and increases load capacity.
- Chamfered belt edges.

Available Moulded Module Sizes

- 152,4 mm / **6 inch** module
- 76,2 mm / **3 inch** module

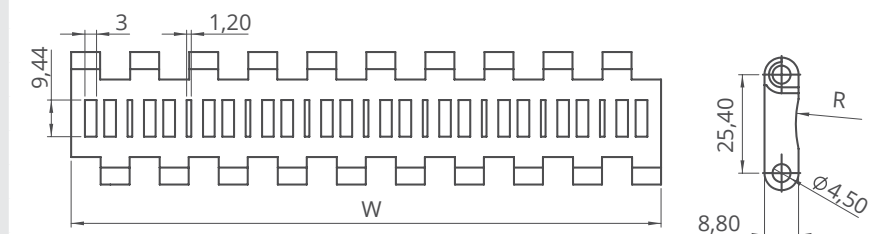
XP254 PR%22 / Technical Information

BELT MATERIAL	BELT STRENGTH				TEMPERATURE		BELT WEIGHT
	Straight		Curve		°C / °F (min.)	°C / °F (max.)	Kg/m² / lb/ft²
	N/m	lb/ft	N/m	lb/ft			
Polypropylene	18400	1260.80	-	-	+5 / +41	+90 / +194	5,50 / 1.13
Polyethylene	9100	623.55	-	-	-73 / -99.4	+66 / +150.8	5,80 / 1.19
Acetal	32100	2199.55	-	-	-43 / -45.4	+110 / +230	7,90 / 1.62

- Belt strength and temperature values are maximum on the table.

XP254 PR%22 / Standard Belt Widths

BELT SERIES	WIDTH (W)				Belt With Tolerance (max.)
	PP-PE		POM		
	mm	inch	mm	inch	
XP254 PR22	152,4	6.0	152,4	6.0	± 0,5 mm
XP254 PR22	228,6	9.0	228,6	9.0	± 2 mm
XP254 PR22	304,8	12.0	304,8	12.0	± 2 mm
XP254 PR22	381,0	15.0	381,0	15.0	± 3 mm
XP254 PR22	457,2	18.0	457,2	18.0	± 3 mm
XP254 PR22	533,4	21.0	533,4	21.0	± 3 mm
XP254 PR22	609,6	24.0	609,6	24.0	± 3 mm
XP254 PR22	685,8	27.0	685,8	27.0	± 4 mm
XP254 PR22	762,0	30.0	762,0	30.0	± 4 mm
XP254 PR22	838,2	33.0	838,2	33.0	± 4 mm
XP254 PR22	914,4	36.0	914,4	36.0	± 4 mm
XP254 PR22	990,6	39.0	990,6	39.0	± 4 mm
XP254 PR22	1066,8	42.0	1066,8	42.0	± 4 mm
XP254 PR22	1143,0	45.0	1143,0	45.0	± 4 mm



- Standard belt increments 76,2 mm.
- Non-standard belt increments 15,2 mm.
- Please contact with customer service for precise belt measurements.

XP254 PR%22

Modular Belt Series

• Meat and Poultry Applications

General Conveyance and Breeding Lines

• Fruit and Vegetable Application

Elevators, Steam Peeler, Inspection Tables, Blanching Lines

• Seafood Applications

Elevators, Inspection Tables, Grading Lines, Trim Lines, Glazing Lines, Cooking Lines

• Bakery Applications

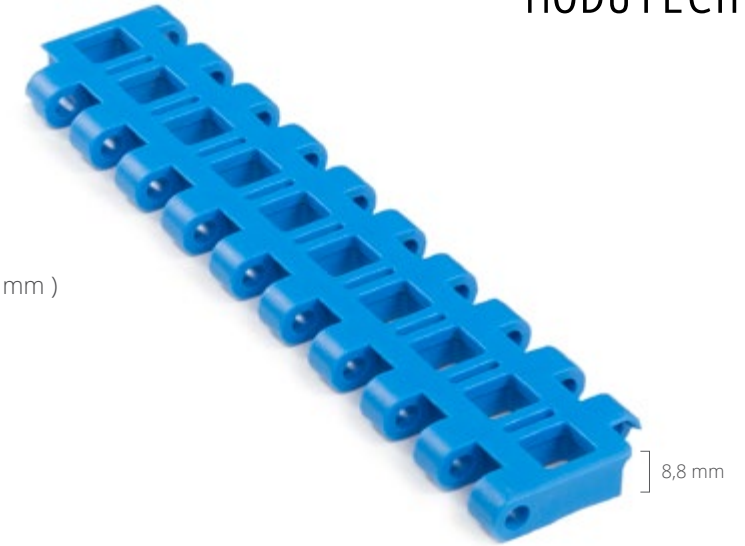
Row Dough Handling, Cooling Lines, Icing Lines, Packing Lines,

Metal Detectors



XP254 FG

Pitch:	25,4 mm / 1 inch
Belt Surface:	Open, Smooth Surface
Minimum Width:	76,2 mm / 3 inch
Open Area (%):	28%. (Biggest opening 8,44 x 9,44 mm)
Flight:	Yes (T25, T50, T75, T100)
Sidewall:	Yes (h=25 mm, h=50 mm, h=75 mm, h=100 mm)
Rod:	Ø4,5 mm / 0.177 inch - Self Lock
Approved:	FDA and EU
Curve:	No
Color:	Additional colors available
Cleanability:	Good
Belt Thickness:	8,8 mm / 0.346 inch



Product Features and Functional Benefits

- Unique sprocket engagement - precise indexing, easy cleaning.
- Different openings to optimize performance in cooling and draining applications.
- Extra power, bi-directional belt for long conveyors.
- Unique sprocket engagement reduces pulsation and increases load capacity.
- Chamfered belt edges.

Available Moulded Module Sizes

- 152,4 mm / **6 inch** module
- 76,2 mm / **3 inch** module

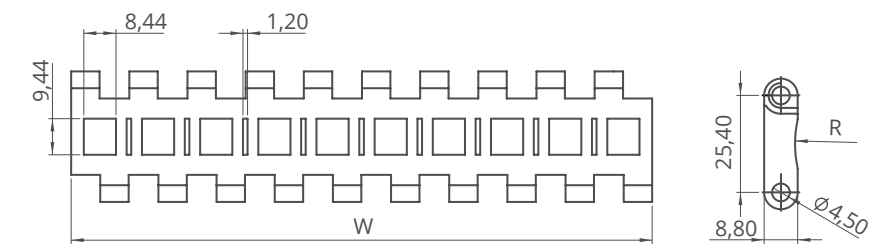
XP254 FG / Technical Information

BELT MATERIAL	BELT STRENGTH				TEMPERATURE		BELT WEIGHT Kg/m ² / lb/ft ²
	Straight		Curve		°C / °F (min.)	°C / °F (max.)	
	N/m	lb/ft	N/m	lb/ft			
Polypropylene	18400	1260.80	-	-	+5 / +41	+90 / +194	5,50 / 1.13
Polyethylene	9100	623.55	-	-	-73 / -99.4	+66 / +150.8	5,80 / 1.19
Acetal	32100	2199.55	-	-	-43 / -45.4	+110 / +230	7,90 / 1.62

- Belt strength and temperature values are maximum on the table.

XP254 FG / Standard Belt Widths

BELT SERIES	WIDTH (W)				Belt With Tolerance (max.)
	PP-PE		POM		
	mm	inch	mm	inch	
XP254 FG	152,4	6.0	152,4	6.0	± 0,5 mm
XP254 FG	228,6	9.0	228,6	9.0	± 2 mm
XP254 FG	304,8	12.0	304,8	12.0	± 2 mm
XP254 FG	381,0	15.0	381,0	15.0	± 3 mm
XP254 FG	457,2	18.0	457,2	18.0	± 3 mm
XP254 FG	533,4	21.0	533,4	21.0	± 3 mm
XP254 FG	609,6	24.0	609,6	24.0	± 3 mm
XP254 FG	685,8	27.0	685,8	27.0	± 4 mm
XP254 FG	762,0	30.0	762,0	30.0	± 4 mm
XP254 FG	838,2	33.0	838,2	33.0	± 4 mm
XP254 FG	914,4	36.0	914,4	36.0	± 4 mm
XP254 FG	990,6	39.0	990,6	39.0	± 4 mm
XP254 FG	1066,8	42.0	1066,8	42.0	± 4 mm
XP254 FG	1143,0	45.0	1143,0	45.0	± 4 mm



- Standard belt increments 76,2 mm.
- Non-standard belt increments 15,2 mm.
- Please contact with customer service for precise belt measurements.

XP254 FG

Modular Belt Series

• Seafood Applicaitons

Breading Machines, Draining Lines, Glazing Lines, Elevators, Freezing Lines

• Snack Food Applications

Proofer Lines, Boiler Infeed, Oven Infeed - Outfeed, Cooling Lines

• Fruits and Vegetables Applications

Prewashing - Rinsing, Draining, Blanching Lines, Elevators

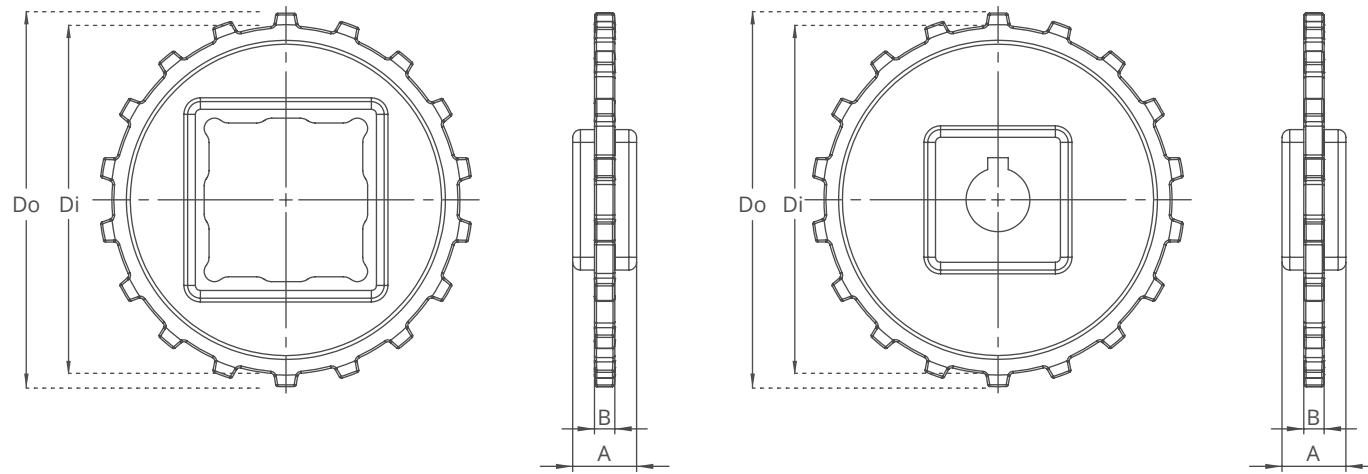
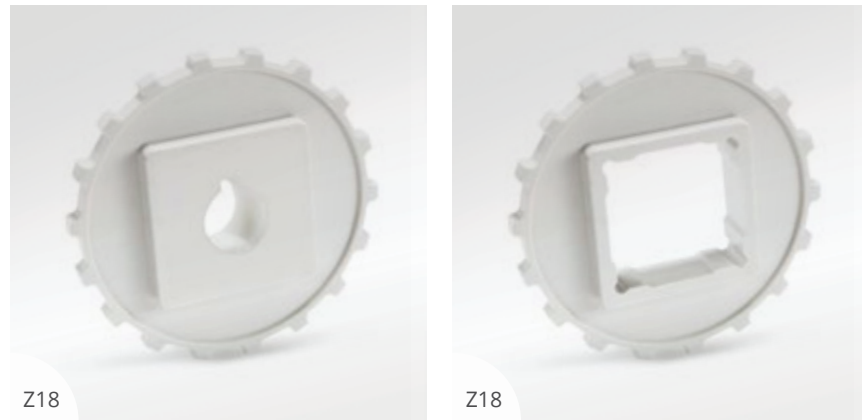
• Packaging Applications

Filling, Accumulation Palletizing - Depalletizing, Box Transfer

• Textile Applications

Cutter, Dyeing

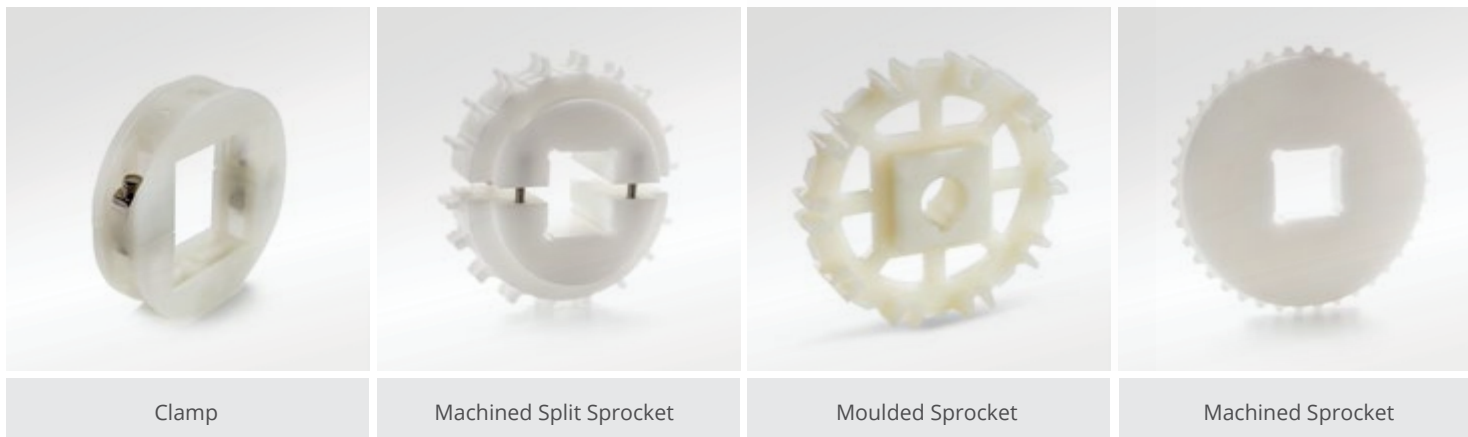
XP254 Series Sprockets and Technical Specifications



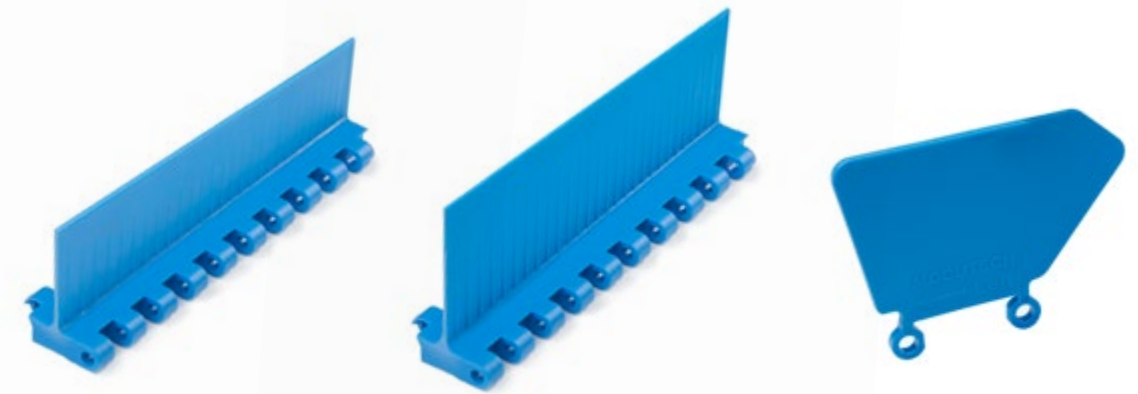
XP254 Series / Standard Sprockets Dimensions

NO. TEETH	Di mm/inch	Do mm/inch	B mm/inch	A mm/inch	Square Bore (Q) mm/inch	Round Bore (R) mm/inch	PRODUCT CODE	
							Square Type (Q)	Round Type (R)
Z8	53,2 / 2.09	64,0 / 2.52	8 / 0.31	25 / 1	25 / 1	25-30 / 1-1.25	XP254SQZ8*PA	XP254SRZ8*PA
Z10	71,6 / 2.82	82,5 / 3.25	8 / 0.31	25 / 1	40 / 1.5	25-30 / 1-1.25	XP254SQZ10*PA	XP254SRZ10*PA
Z12	89,0 / 3.50	99,5 / 3.92	8 / 0.31	25 / 1	40 / 1.5	25-30 / 1-1.25	XP254SQZ12*PA	XP254SRZ12*PA
Z15	114,0 / 4.49	124,0 / 4.88	8 / 0.31	25 / 1	40-60 / 1.5-2.5	25-30 / 1-1.25	XP254SQZ15*PA	XP254SRZ15*PA
Z18	136,4 / 5.37	146,4 / 5.76	8 / 0.31	25 / 1	40-60 / 1.5-2.5	25-30 / 1-1.25	XP254SQZ18*PA	XP254SRZ18*PA

*Other sprockets and hub sizes are manufactured up to request. *POM (Acetal) and PP (Polypropylene) sprockets raw material is available on request.
***Machined Split Sprockets are available for each size.**

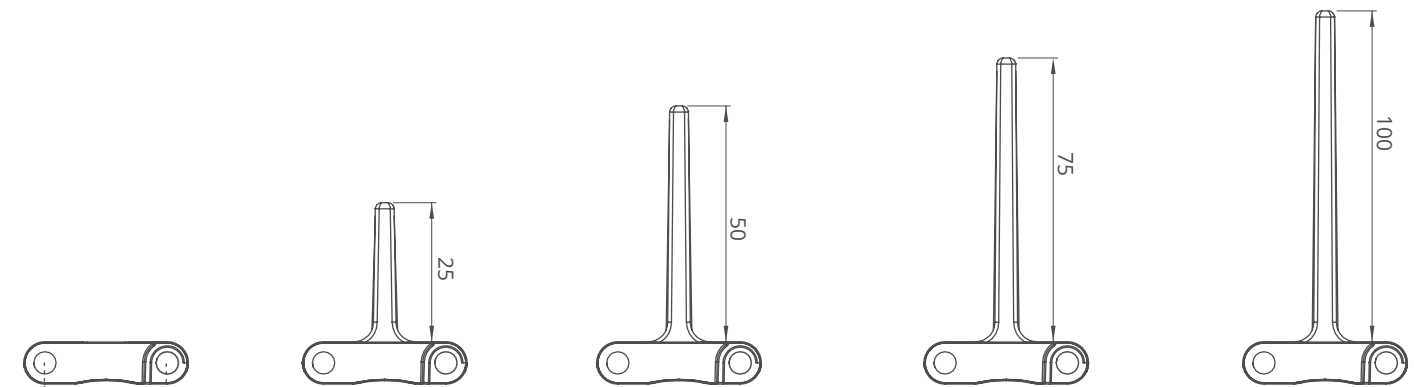


XP254 Series Accessories and Technical Specifications

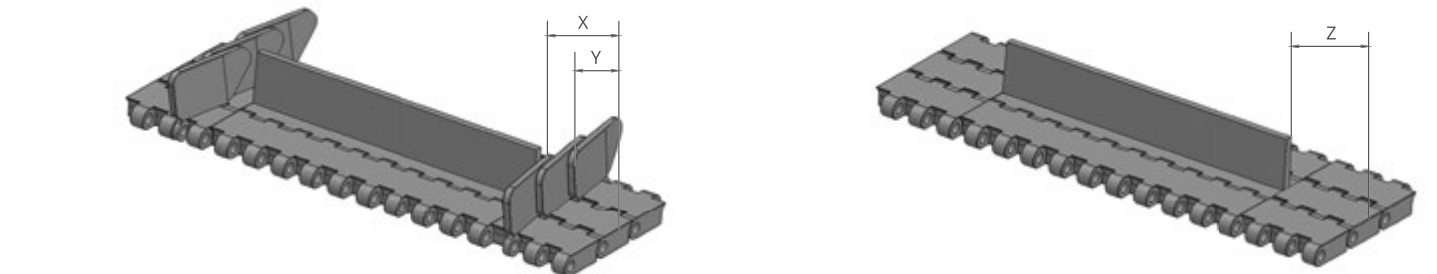


XP254 Series / Flight & Sidewall Dimensions

XP254 Series / Flights & Sidewalls				
PRODUCT CODE	Flight Height (mm/inch)	Flight Width (mm/inch)	PRODUCT CODE	Sidewall Height (mm/inch)
XP254T25	25 / 1	152,4 / 6	XP254SW25	25 / 1
XP254T50	50 / 2	152,4 / 6	XP254SW50	50 / 2
XP254T75	75 / 3	152,4 / 6	XP254SW75	75 / 3
XP254T100	100 / 4	152,4 / 6	XP254SW100	100 / 4



* Additional flight dimensions are available up to 75 mm.



XP254 Series / Sidewall Technical Specifications

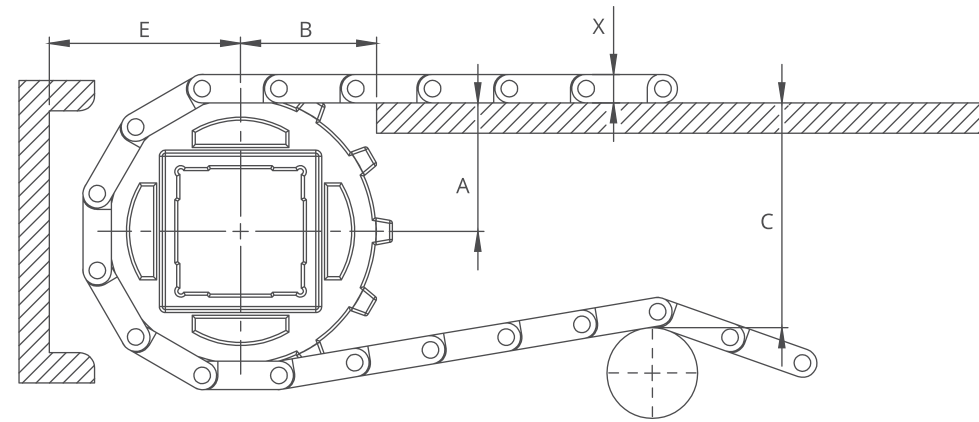
Possible Sidewall and Flight Indents	X		Y	
	mm	inch	mm	inch
Standard, module cutting necessary	26,6	1.05	13,1	0.52
Non-standard	38,1	1.50	20,7	0.82
Standard, no module cutting	45,7	1.80	28,4	1.12
Non-standard	53,3	2.10	36,0	1.42
Standard, module cutting necessary	61,0	2.40	43,6	1.72

Note: Gap between flight and sidewall minimum 2-3 mm

XP254 Series / Flight Technical Specifications

Possible Flight Indents for XP254 Series	Z	
	mm	inch
Standard, module cutting	15,0	0.59
Standard, no module cutting	30,0	1.18
Standard, no module cutting	45,0	1.77
Standard, module cutting	60,0	2.36
Standard, no module cutting	76,0	2.99

*Non-standard flight indent is on request.

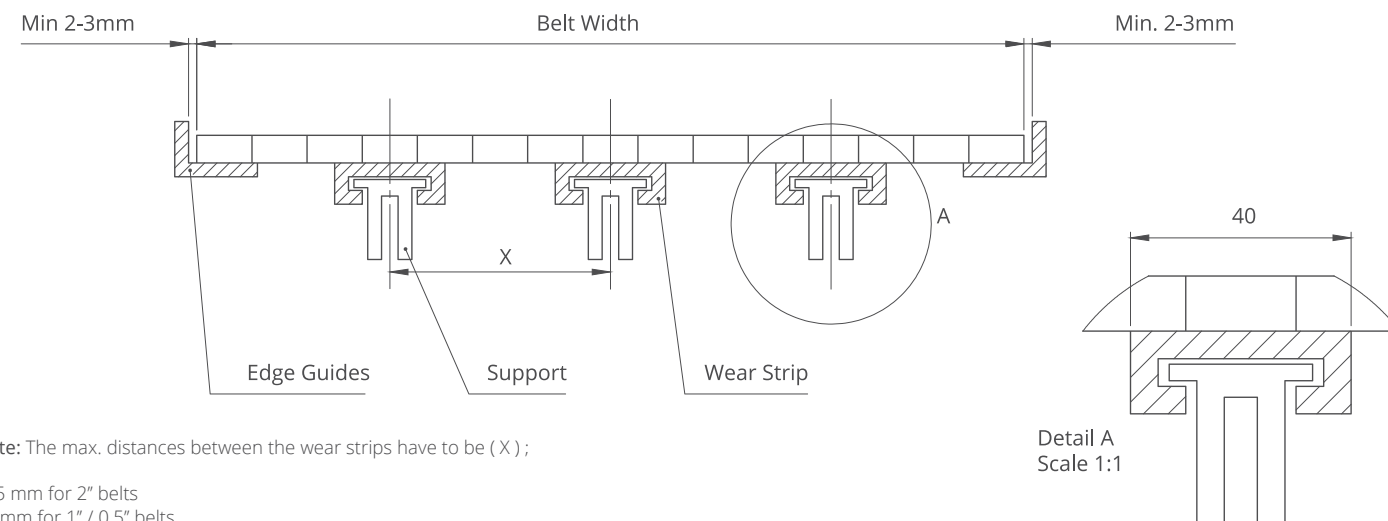


A - ± 0,031" (1mm)
 B - ± 0,125" (3mm)
 C - ± (Max.)
 E - ± (Min.)

XP254 Series / Conveyor Frame Dimensions

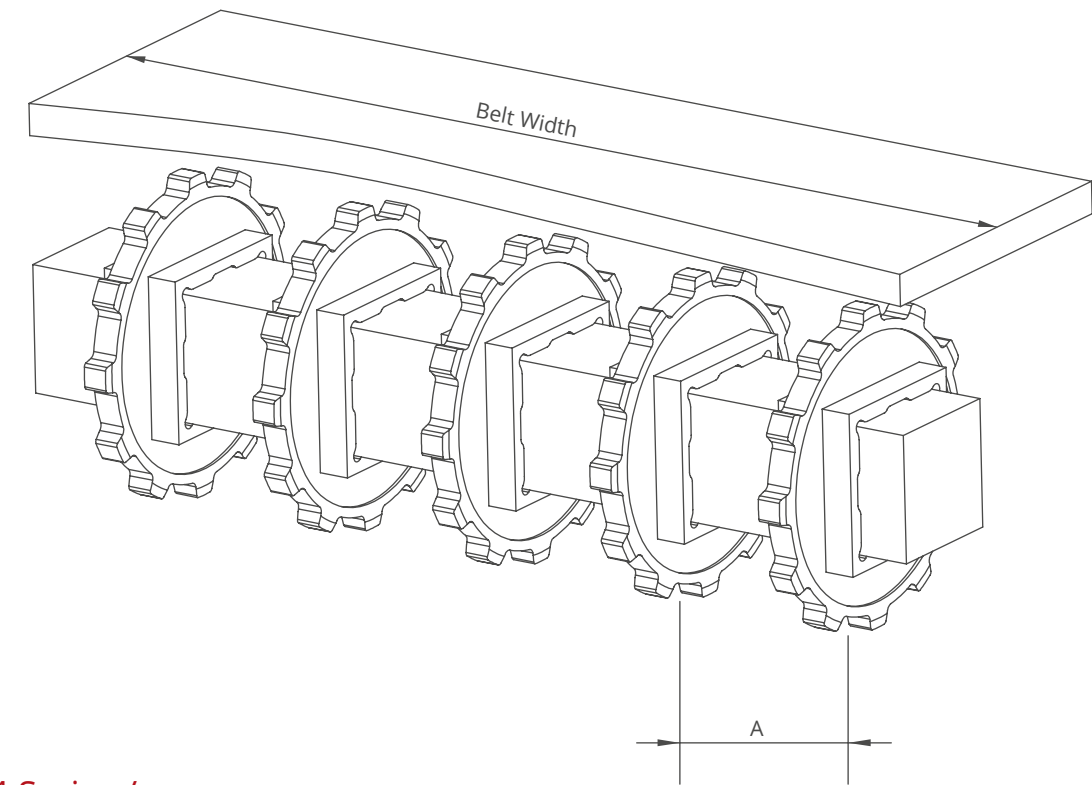
Sprockets Description			A		B		C		E		X	
Pitch Diameter		No.Teeth	Range (Bottom to Top)		inch	mm	inch	mm	inch	mm	inch	mm
inch	mm		inch	mm								
XP254 FLT CR, XP254 C, XP254 FG, XP254 PR%22												
2.32	59,0	8	1.17	29,8	1.44	36,5	1.94	49,3	1.91	48,6	0.35	8,8
2.99	76,0	10	1.47	37,0	1.69	42,9	2.57	65,4	2.21	56,2	0.35	8,8
3.59	91,2	12	1.79	45,5	1.86	47,3	3.19	81,1	2.53	64,3	0.35	8,8
4.65	118,0	15	2.22	56,3	2.13	54,1	4.15	105,3	2.96	75,1	0.35	8,8
5.67	144,0	18	2.71	69,0	2.31	58,7	5.16	131,0	3.45	87,8	0.35	8,8
XP254 CR												
2.32	59,0	8	1.17	29,8	1.44	36,5	1.94	49,3	1.91	48,6	0.37	9,3
2.99	76,0	10	1.47	37,0	1.69	42,9	2.57	65,4	2.21	56,2	0.37	9,3
3.59	91,2	12	1.79	45,5	1.86	47,3	3.19	81,1	2.53	64,3	0.37	9,3
4.65	118,0	15	2.22	56,3	2.13	54,1	4.15	105,3	2.96	75,1	0.37	9,3
5.67	144,0	18	2.71	69,0	2.31	58,7	5.16	131,0	3.45	87,8	0.37	9,3

XP254 Series / Slider Support System For Straight Running Belts



Note: The max. distances between the wear strips have to be (X);

125 mm for 2" belts
 80 mm for 1" / 0.5" belts



XP254 Series / Sprockets Arrangement

Standard Belt Width		Number of sprockets per shaft		A (mm/inch)	
mm	inch	Drive Shaft	Return Shaft	Min.	Max.
152,4	6.0	2	2	60/2.36	170/6.6
228,6	9.0	2	2	60/2.36	170/6.6
304,8	12.0	3	2	60/2.36	170/6.6
381,0	15.0	4	3	60/2.36	170/6.6
457,2	18.0	5	3	60/2.36	170/6.6
533,4	21.0	5	3	60/2.36	170/6.6
609,6	24.0	6	3	60/2.36	170/6.6
685,8	27.0	6	4	60/2.36	170/6.6
762,0	30.0	7	4	60/2.36	170/6.6
838,2	33.0	7	4	60/2.36	170/6.6
914,4	36.0	8	4	60/2.36	170/6.6
990,6	39.0	8	5	60/2.36	170/6.6
1066,8	42.0	9	5	60/2.36	170/6.6
1143,0	45.0	9	5	60/2.36	170/6.6
1219,2	48.0	10	5	60/2.36	170/6.6
1295,4	51.0	10	6	60/2.36	170/6.6
1371,6	54.0	11	7	60/2.36	170/6.6
1447,8	57.0	11	7	60/2.36	170/6.6
1524,0	60.0	12	7	60/2.36	170/6.6
1600,2	63.0	12	8	60/2.36	170/6.6
1676,4	66.0	12	8	60/2.36	170/6.6
1752,6	69.0	13	8	60/2.36	170/6.6
1828,8	72.0	14	9	60/2.36	170/6.6
1905,0	75.0	14	9	60/2.36	170/6.6
1981,2	78.0	15	10	60/2.36	170/6.6
2057,4	81.0	15	10	60/2.36	170/6.6

Note: Number of sprockets depends on the belt load.