

# *XP254*

*Corrugated Belt Series*

*XP254 CR*

*XP254 FLT CR*

*Sprockets*

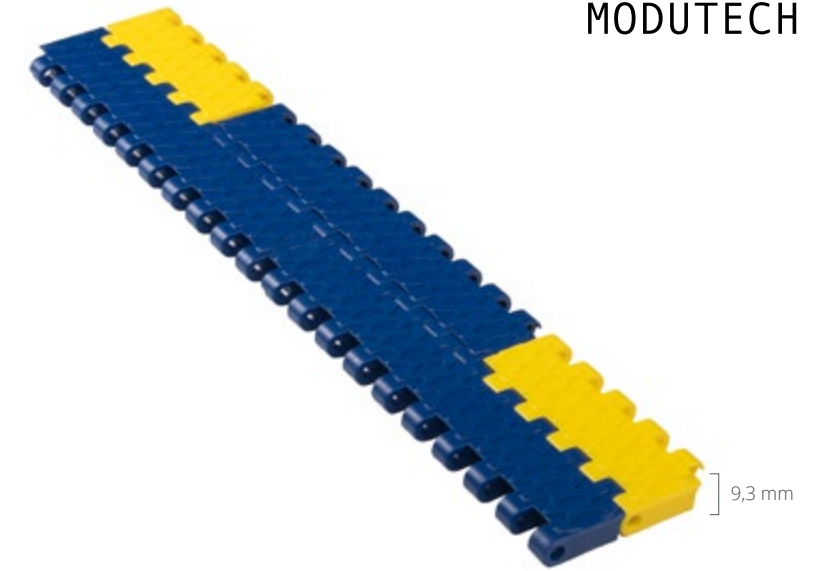
*Engineering Information*





# XP254 CR

Pitch:	25,4 mm / <b>1 inch</b>
Belt Surface:	Close, Non Slip Surface
Minimum Width:	76,2 mm / <b>3 inch</b>
Open Area (%):	0%
Flight:	No
Sidewall:	No
Rod:	Ø4,5 mm / <b>0.177 inch</b> - Self Lock
Approved:	No
Curve:	No
Color:	Additional colors available
Cleanability:	Good
Belt Thickness:	9,3 mm / <b>0.366 inch</b>



## Product Features and Functional Benefits

- Chamfered belt edges.
- Reinforced bottom surface - higher product load and longer conveyors.
- Unique sprocket engagement reduces pulsation and increases load capacity.
- Close transfer applications.
- Extra power, bi-directional belt for long conveyors.
- Safety walking top surface.

## Available Moulded Module Sizes

- 152,4 mm / **6 inch** module
- 76,2 mm / **3 inch** module

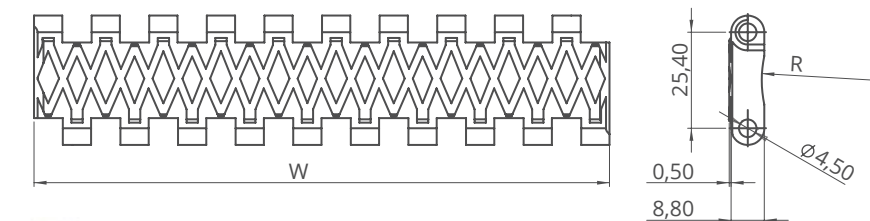
## XP254 CR / Technical Information

BELT / PIN MATERIAL	BELT STRENGTH				TEMPERATURE		BELT WEIGHT
	Straight		Curve		°C / °F (min.)	°C / °F (max.)	Kg/m <sup>2</sup> / lb/ft <sup>2</sup>
	N/m	lb/ft	N/m	lb/ft			
Acetal / PA6	40250	<b>2758</b>	-	-	-43 / <b>-45.4</b>	+110 / <b>+230</b>	8,1 / <b>1.67</b>

- Belt strength and temperature values are maximum on the table.

## XP254 CR / Standard Belt Widths

BELT SERIES	WIDTH (W)				Belt With Tolerance (max.)
	PP-PE		POM		
	mm	inch	mm	inch	
XP254 CR	-	-	76,2	<b>3.0</b>	± 0,5 mm
XP254 CR	-	-	152,4	<b>6.0</b>	± 0,5 mm
XP254 CR	-	-	228,6	<b>9.0</b>	± 2 mm
XP254 CR	-	-	304,8	<b>12.0</b>	± 2 mm
XP254 CR	-	-	381,0	<b>15.0</b>	± 3 mm
XP254 CR	-	-	457,2	<b>18.0</b>	± 3 mm
XP254 CR	-	-	533,4	<b>21.0</b>	± 3 mm
XP254 CR	-	-	609,6	<b>24.0</b>	± 3 mm
XP254 CR	-	-	685,8	<b>27.0</b>	± 4 mm
XP254 CR	-	-	762,0	<b>30.0</b>	± 4 mm
XP254 CR	-	-	838,2	<b>33.0</b>	± 4 mm
XP254 CR	-	-	914,4	<b>36.0</b>	± 4 mm
XP254 CR	-	-	990,6	<b>39.0</b>	± 4 mm
XP254 CR	-	-	1066,8	<b>42.0</b>	± 4 mm
XP254 CR	-	-	1143,0	<b>45.0</b>	± 4 mm

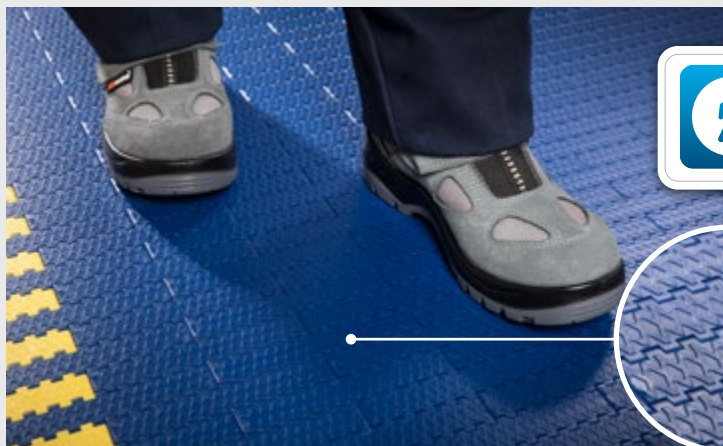


- Standard belt increments 76,2 mm.  
- Please contact with customer service for precise belt measurements.

# XP254 CR

## Corrugated Belt Series

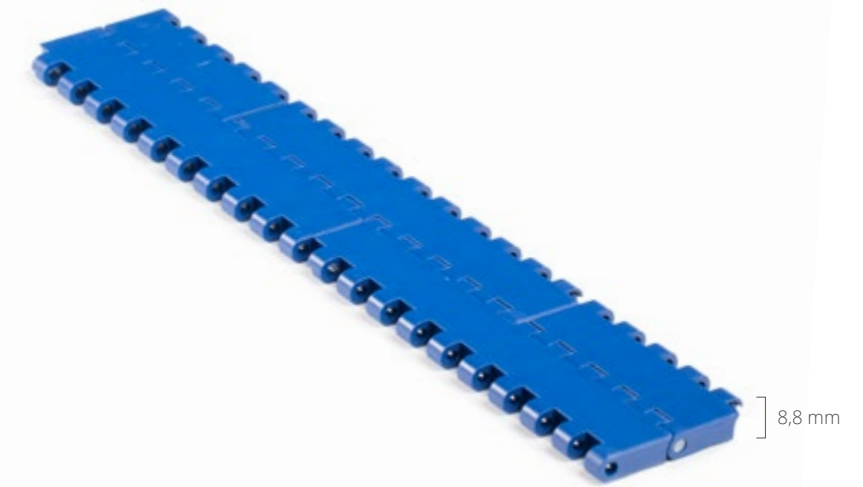
- Corrugated Cardbord Applications  
Down Stackers, Corrugator Take Off, Strap Feed



Safety first because Modutech cares about you!  
Non-Skid surface offers safety through walking for corrugated industry.

# XP254 FLT CR

Pitch:	25,4 mm / <b>1 inch</b>
Belt Surface:	Close, Smooth Surface
Minimum Width:	76,2 mm / <b>3 inch</b>
Open Area (%):	0%
Flight:	No
Sidewall:	No
Rod:	Ø4,5 mm / <b>0.177 inch</b> - Self Lock
Approved:	No
Curve:	No
Color:	Additional colors available
Cleanability:	Good
Belt Thickness:	8,8 mm / <b>0.346 inch</b>



## Product Features and Functional Benefits

- Chamfered belt edges.
- Reinforced bottom surface - higher product load and longer conveyors.
- Unique sprocket engagement reduces pulsation and increases load capacity.
- Close transfer applications.
- Extra power, bi-directional belt for long conveyors.

## Available Moulded Module Sizes

- 152,4 mm / **6 inch** module
- 76,2 mm / **3 inch** module

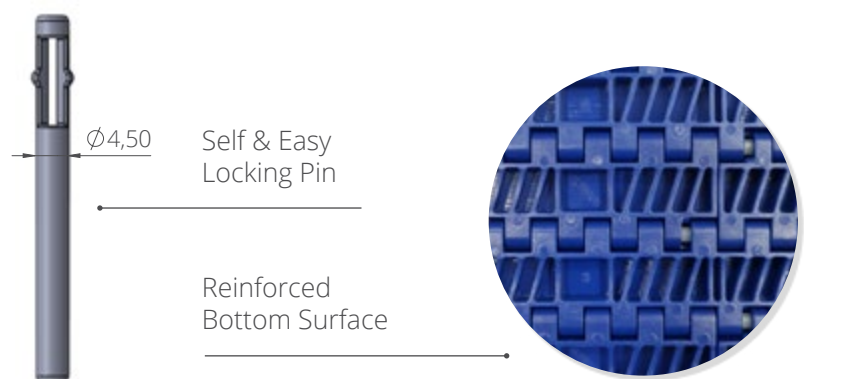
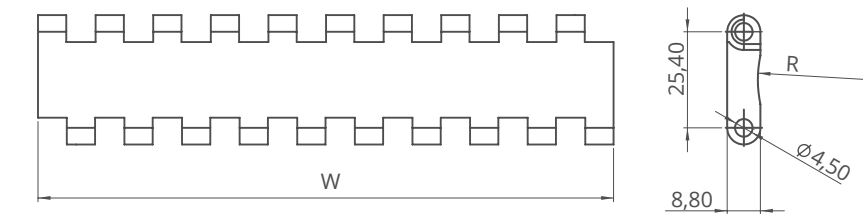
## XP254 FLT CR / Technical Information

BELT / PIN MATERIAL	BELT STRENGTH				TEMPERATURE		BELT WEIGHT
	Straight		Curve		°C / °F (min.)	°C / °F (max.)	Kg/m <sup>2</sup> / lb/ft <sup>2</sup>
	N/m	lb/ft	N/m	lb/ft			
Acetal / PA6	40250	<b>2758</b>	-	-	-43 / <b>-45.4</b>	+110 / <b>+230</b>	8,1 / <b>1.67</b>

- Belt strength and temperature values are maximum on the table.

## XP254 FLT CR / Standard Belt Widths

BELT SERIES	WIDTH (W)				Belt With Tolerance (max.)
	PP-PE		POM		
	mm	inch	mm	inch	
XP254 FLTCR	-	-	76,2	<b>3.0</b>	± 0,5 mm
XP254 FLTCR	-	-	152,4	<b>6.0</b>	± 0,5 mm
XP254 FLTCR	-	-	228,6	<b>9.0</b>	± 2 mm
XP254 FLTCR	-	-	304,8	<b>12.0</b>	± 2 mm
XP254 FLTCR	-	-	381,0	<b>15.0</b>	± 3 mm
XP254 FLTCR	-	-	457,2	<b>18.0</b>	± 3 mm
XP254 FLTCR	-	-	533,4	<b>21.0</b>	± 3 mm
XP254 FLTCR	-	-	609,6	<b>24.0</b>	± 3 mm
XP254 FLTCR	-	-	685,8	<b>27.0</b>	± 4 mm
XP254 FLTCR	-	-	762,0	<b>30.0</b>	± 4 mm
XP254 FLTCR	-	-	838,2	<b>33.0</b>	± 4 mm
XP254 FLTCR	-	-	914,4	<b>36.0</b>	± 4 mm
XP254 FLTCR	-	-	990,6	<b>39.0</b>	± 4 mm
XP254 FLTCR	-	-	1066,8	<b>42.0</b>	± 4 mm
XP254 FLTCR	-	-	1143,0	<b>45.0</b>	± 4 mm



- Standard belt increments 76,2 mm.  
- Please contact with customer service for precise belt measurements.

# XP254 FLT CR

## Corrugated Belt Series

- Corrugated Cardbord Applications
- Down Stackers, Corrugator Take Off, Strap Feed