

## Han 16A-BU-C

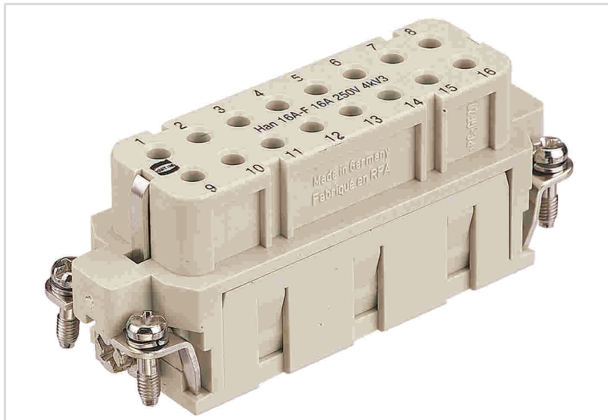


Image is for illustration purposes only. Please refer to product description.

Part number	09 20 016 3101
Specification	Han 16A-BU-C
HARTING eCatalogue	<a href="https://b2b.harting.com/09200163101">https://b2b.harting.com/09200163101</a>

### Identification

Category	Inserts
Series	Han A <sup>®</sup>

### Version

Termination method	Crimp termination
Gender	Female
Size	16 A
Number of contacts	16
PE contact	Yes
Details	Please order crimp contacts separately.

### Technical characteristics

Conductor cross-section	0.14 ... 4 mm <sup>2</sup>
Rated current	16 A
Rated voltage	250 V
Rated impulse voltage	4 kV
Pollution degree	3
Rated voltage acc. to UL	600 V
Insulation resistance	>10 <sup>10</sup> Ω
Limiting temperature	-40 ... +125 °C
Mating cycles	≥500



Pushing Performance  
Since 1945

## Material properties

Material (insert)	Polycarbonate (PC)
Colour (insert)	RAL 7032 (pebble grey)
Material flammability class acc. to UL 94	V-0
RoHS	compliant
ELV status	compliant
China RoHS	e
REACH Annex XVII substances	Not contained
REACH ANNEX XIV substances	Not contained
REACH SVHC substances	Not contained
California Proposition 65 substances	Yes
California Proposition 65 substances	Lead Nickel
Fire protection on railway vehicles	EN 45545-2 (2020-08)
Requirement set with Hazard Levels	R22 (HL 1-3) R23 (HL 1-3)

## Specifications and approvals

Specifications	EN 60664-1 IEC 61984
Approvals	DNV GL
UL / CSA	UL 1977 ECBT2.E235076 UL 2237 PVVA2.E318390 CSA-C22.2 No. 182.3 PVVA8.E318390

## Commercial data

Packaging size	1
Net weight	35 g
Country of origin	Germany
European customs tariff number	85389099
eCl@ss	27440205 Contact insert for industrial connectors